



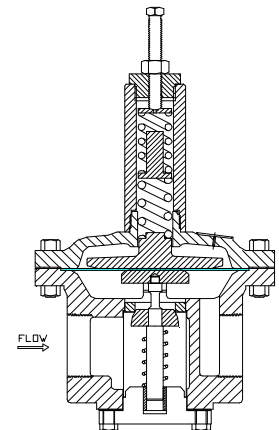
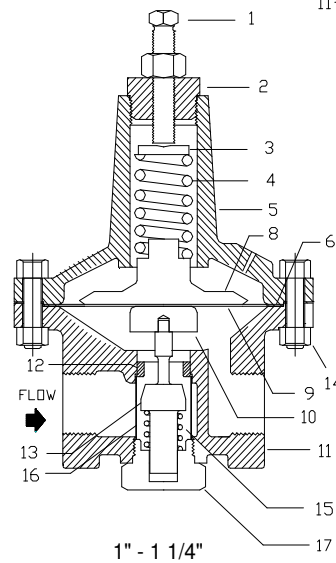
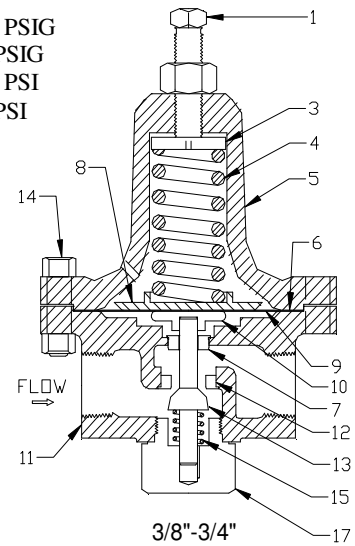
# 995 Series Pressure Regulator Installation & Maintenance Instructions

12950 W. 8 Mile Road \* Oak Park, MI 48237 \* Phone: (248) 399-8000 \* Fax: (248) 399-7246 \* [www.TRERICE.com](http://www.TRERICE.com)

## INSTALLATION

1. Before installing regulator, blow out piping thoroughly to remove any loose dirt or scale
2. Install strainer and steam trap ahead (upstream) of regulator
3. Install regulator in horizontal pipe only. **WARNING:** Regulators installed on vertical piping can be erratic and wear prematurely.
4. Loosen lock nut, then loosen adjusting screw enough to release all tension on the Regulator adjusting spring.
5. Turn on pressure slowly. Then turn down adjusting screw enough to open valve slightly. Operate in this manner for several minutes.
6. Turn down adjusting screw slowly at intervals until desired pressure is obtained. Tighten lock nut.

|                     |          |
|---------------------|----------|
| MAX. INLET PRESSURE | 250 PSIG |
| MIN. INLET PRESSURE | 15 PSIG  |
| MAX. DIFF. PRESSURE | 125 PSI  |
| MIN. DIFF. PRESSURE | 15 PSI   |



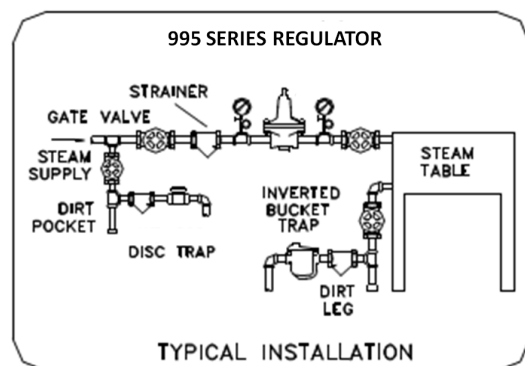
## MAINTENANCE

Unsatisfactory regulation is usually due to dirt, pipe compound, etc., blocking the internal strainer or gumming the internal mechanism. To clean strainer, first make sure pressure has been relieved from system. Unscrew bottom plug and remove strainer screen. Clean the lower part of the valve. This can be accomplished without removing the valve from the line or unbolting the cover. If cleaning the strainer does not correct operation, remove valve from line and disassemble parts. After cleaning parts the disc and seat should be lapped together using fine lapping compound. Avoid excessive lapping as this cuts ridges and makes tight seating impossible. Reassemble valve.

## PARTS LIST

|       |   |
|-------|---|
| 1     | Adjusting Screw (includes Lock Nut)             |
| 2     | Adjusting Spring Cap                            |
| 3     | Spring Washer                                   |
| 4     | Adjusting Spring (state range)                  |
| 5     | Cover   |
| 6*    | Cover Gasket                                    |
| 7     | Stem Guide                                      |
| 8     | Upper Diaphragm Plate                           |
| 9*    | Diaphragm (bronze, 2 sheets)                    |
| 9a*   | Diaphragm (composition, for water, oil or air)  |
| 10    | Lower Diaphragm Plate                           |
| 11-12 | Body Ass'y (includes Seat Insert)               |
| 13    | Disc (includes Lock Nuts)                       |
| 14*   | Cover Bolts & Nuts, each                        |
| 15*   | Main Spring                                     |
| 16*   | Strainer Screen ( for sizes 1"-2" only)         |
| 17    | Bottom Plug                                     |
| 17A   | Bottom Cover (for 1 1/2" & 2" sizes only)       |
| 18    | Bottom Cover Bolts & Nuts (6)(1 1/2" & 2" only) |
| 19*   | Bottom Cover Gasket (1 1/2" & 2" only)          |

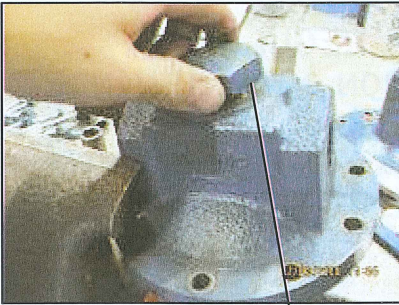
\* Recommended Spare Parts



The H.O. Trerice Co warrants products of its manufacture to be free from defects in workmanship and material for a period of one year from the date of shipment to the original purchaser. Trerice will repair or replace such product (F.O.B. Factory) should our internal examination reveal it to be defective. Product used in conjunction with non-Trerice product, or in any way modified or altered may not be covered under the terms of this warranty. Trerice assumes no other responsibility or liability.



CLEANING STRAINER



Remove lower plug. —



Remove and clean strainer screen.



Blow debris from body & reassemble.

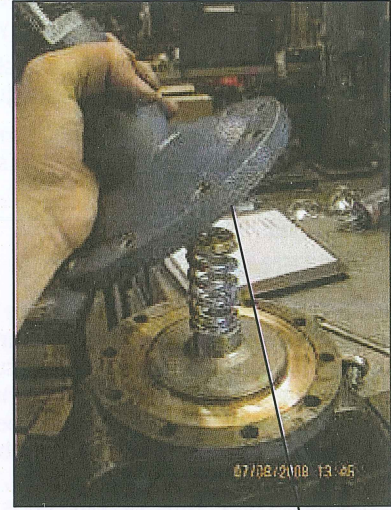
REMOVE VALVE FROM LINE AND DISASSEMBLE



Remove valve from line.



Remove cover bolts. —



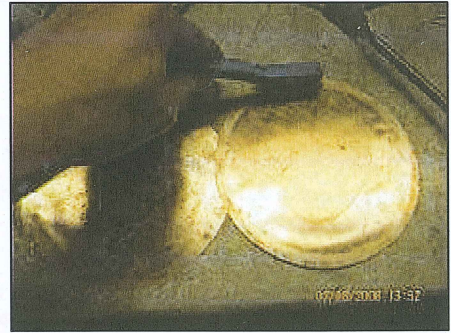
Remove cover. —



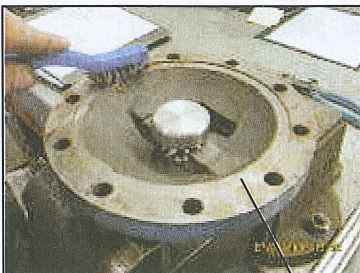
Remove, inspect & clean parts.



Remove gasket. —



Inspect and clean diaphragms.



Clean gasket surfaces. —



Remove lower plug. —



Remove spring & disc. Clean and lap disc to seat.



Remove, inspect and clean strainer. —

Reassemble valve using new gaskets.