

# Solid State Relay

## TA600 Series • AC Output

CONTROLLER ACCESSORIES



TA625 shown

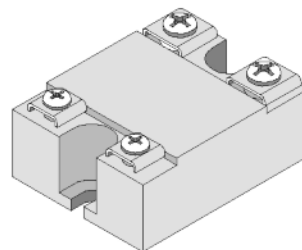
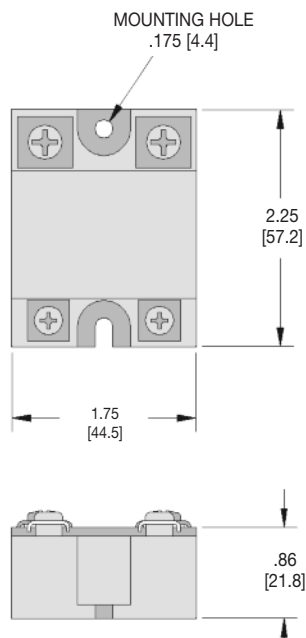
- ▶ UL Listed
- ▶ Arc Free Switching
- ▶ Opto-Isolated Input Circuits
- ▶ Compatible with DTL and TTL Logic

The Trerice **TA600 Series** Solid State Relay has no moving parts, rendering it impervious to shock and vibration, and giving it a virtually infinite life.

### HOW TO ORDER

Please order using Item Number **TA610**, **TA625** or **TA640**

All dimensions are nominal. Dimensions in [ ] are in millimeters.



### Specifications

#### Models

**TA610:** 10 A output  
**TA625:** 25 A output  
**TA640:** 40 A output

**Case** Epoxy molded with aluminum baseplate

**Connection** Screw terminals

**Input** Voltage: 3-32 Vdc  
Impedance: 1000Ω minimum  
Must turn on: 3.0 Vdc  
Must turn off: 1.0 Vdc  
Isolation signal to load: 7000 Vdc  
Isolation signal to base: 2500 Vdc  
Capacitance signal to load: 15 pt

**Output** Voltage: 20~300 Vrms  
Typical turn-on voltage: 5 Vrms  
Response time: 0.5 cycle max.  
OFF state DV/DT: 200 V/m sec  
OFF state leakage current: 15 mA  
Max. non-repetitive single cycle surge current: 400 A  
Cycle surge current: 400 A  
IT for fusing (T=8.3 ms): 400 AS  
Peak inverse voltage: 600 Vpk

#### Ambient Temperature

-20°F (-30°C) to 140°F (60°C)

#### Approximate Shipping Weight

0.2 lbs [0.09 kg]