

# 765B/766SS

## Low Pressure Gauge • Stainless Steel Case

SPECIALTY GAUGES



766SS shown



- ▶ 2 1/2", 4", 6" Dial Sizes
- ▶ ±1.6% Accuracy (2 1/2", 4")
- ▶ ±2.0% Accuracy (6")
- ▶ Stainless Steel Case

The Trerice **765B/766SS Series** Low Pressure Gauge is designed to accurately measure extreme low pressure conditions. This pressure gauge employs a diaphragm capsule sensing element to measure the low pressure. Case material and wetted parts are either brass or stainless steel.

- Optional features and case style variations available: Please consult the Options & Accessories Section for details.
- For correct use and application of all pressure gauges, please refer to: Pressure Gauge Standard ASME B40.100.

### Specifications

<b>Model</b>	<b>Wetted Parts</b>
<b>765B</b>	316L stainless steel diaphragm, brass socket
<b>766SS</b>	316L stainless steel diaphragm, 316L stainless steel socket
<b>Dial Sizes</b>	2 1/2", 4", 6"
<b>Movement</b>	316 Stainless Steel
<b>Connection</b>	Lower male or center back male, 1/4 or 1/2 NPT
<b>Case</b>	304 stainless steel, satin finished, stem-mounted flangeless
<b>Ring</b>	Bayonet type, 304 stainless steel
<b>Window</b>	Safety glass
<b>Pointer</b>	Plain, black finished Adjustable via screw on dial face
<b>Dial Face</b>	Aluminum, white background with black graduations and markings
<b>Accuracy</b>	2 1/2" Dial Size: ±1.6% Full Scale 4" Dial Size: ±1.6% Full Scale 6" Dial Size: ±2.0% Full Scale

### Maximum Temperature

**765B 140°F (68°C)**  
**766SS 212°F (100°C)**

### Approximate Shipping Weight

2 1/2" Dial Size:  
0.3 lbs [0.14 kg]  
4" Dial Size:  
1.4 lbs [0.64 kg]  
6" Dial Size:  
1.9 lbs [0.86 kg]

### HOW TO ORDER

Sample Order Number: **766SS 40 02 L W 600**

Model	Dial Size	Connection Size	Connection Location	Units of Measure	Range Code
<b>765B</b>	25 2 1/2"	02 1/4 NPT	L Lower	T Pressure	See Standard Ranges
<b>766SS</b>	40 4"	04 1/2 NPT*	B Back	W Vacuum	
	60 6"				

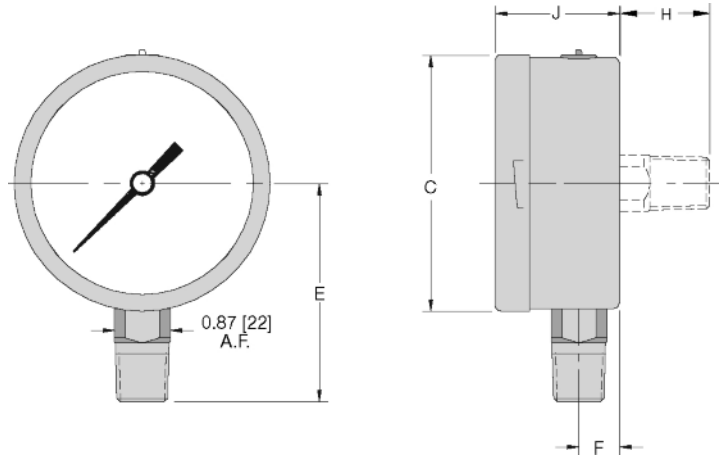
\* Not available with 2 1/2" dial size.

# 765B/766SS

All dimensions are nominal. Dimensions in [ ] are in millimeters.

## Low Pressure Gauge • Stainless Steel Case

SPECIALTY GAUGES



Dial Size	C	E	F	H	J
2 1/2"	2.48 [63]	2.09 [53]	0.43 [11]	1.06 [27]	1.46 [37]
4"	3.98 [101]	3.43 [87]	0.63 [16]	1.38 [35]	1.93 [49]
6"	6.34 [161]	4.76 [121]	0.69 [18]	1.38 [35]	1.97 [50]

### Standard Ranges\*

Pressure (T)			
Range Code	Specific Range	Figure Intervals	Minor Divisions
645	0/10 in. H <sub>2</sub> O	1	0.2
650	0/15 in. H <sub>2</sub> O	3	0.2
660	0/30 in. H <sub>2</sub> O	5	0.5
670	0/60 in. H <sub>2</sub> O	10	1
680	0/100 in. H <sub>2</sub> O	10	1
690	0/160 in. H <sub>2</sub> O	20	2
700	0/200 in. H <sub>2</sub> O	20	2
720	0/300 in. H <sub>2</sub> O	50	5
652	0/10 oz./in. <sup>2</sup>	1	0.2
655	0/15 oz./in. <sup>2</sup>	3	0.2
662	0/20 oz./in. <sup>2</sup> & 0/34 in. H <sub>2</sub> O	2/5	0.2/0.2
667	0/30 oz./in. <sup>2</sup>	5	0.5
665	0/60 oz./in. <sup>2</sup>	10	1
695	0/100 oz./in. <sup>2</sup>	10	1
725	0/160 oz./in. <sup>2</sup>	20	2
750	0/250 oz./in. <sup>2</sup>	50	2
675	0/3 psi	0.5	0.05
685	0/5 psi	0.5	0.05
715	0/10 psi	1	0.2

### Standard Ranges\*

Vacuum (W)			
Range Code	Specific Range	Figure Intervals	Minor Divisions
580	15/0 in. H <sub>2</sub> O	5	0.2
600	30/0 in. H <sub>2</sub> O	5	0.5
610	60/0 in. H <sub>2</sub> O	10	1
620	100/0 in. H <sub>2</sub> O	10	2
635	200/0 in. H <sub>2</sub> O	20	2
595	15/0 oz./in. <sup>2</sup>	5	0.2
605	30/0 oz./in. <sup>2</sup>	5	0.5
625	60/0 oz./in. <sup>2</sup>	10	1
633	100/0 oz./in. <sup>2</sup>	10	2

\* Compound ranges are also available. Please consult factory.